

# HIGH NOTES

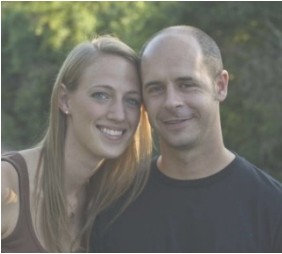
*Lifting and Loving You in Christ*



January 2009

VOL. 24, NO. 1

## Ryan & Naomi Legler



Here's where I get to tell you a little about who I am. I grew up in Hanover Park, IL, outside of Chicago. I lived in Ft. Lauderdale, FL, for my internship, and am most recently from Owasso, OK, where I served for five years. I have two parents, one brother who is married with two little daughters, a new wife (Naomi!), and lots of instruments.

I have been playing music for the past twenty-two years and I still love it. I am mainly a percussionist, but also play guitar and other stringed instruments. I have been teaching privately for eight years and in public schools with drum lines for three years. Through various tours, I have been to more than fifteen countries and thirty states, playing music in most of them. I love traveling and meeting new people in different cultures.

My favorite foods are pizza and Pepsi. In my free time I also like art and playing sports. I am fairly decent at most sports unless I try to play basketball. I am usually ready for anything athletic. I have studied three styles of martial arts, and have taught for the past two years.

Youth ministry is something I get very excited about. I love my job! What could be better than loving people, teaching God's Word, and playing games? If there's anything else you would like to know, just ask.

## Stephen Ministry



The Stephen Ministry program here at Ascension has been so blessed over the past year! We look forward to what God has in store for us as we begin the new year of 2009.

One of our many blessings this past year is the training class for 2008-2009. Each and every one of them has been such a blessing! We are so happy to have them in training to become Stephen Ministers. Each is very special and unique in his/her own way.

All of the active Stephen Ministers and Stephen leaders are a blessing to each other as well as those to whom they are serving in their loving, caring and confidential relationships.

For all of the Stephen Ministers, prayer is a very important part of the ministry. We continue to lift each other up in prayer as well as our care receivers. We also ask that you continue to remember the Stephen ministers and the care receivers in your prayers.

We wish you a happy, healthy, and prosperous new year in 2009.

***God didn't promise days without pain, laughter without sorrow, sun without rain, but He did promise strength for the day, comfort for the tears, and light for the way.*** (Unknown)



## Special Offering for Education



Each year Kansas District congregations join to support district missions and ministry through Ash Wednesday offerings. On February 25, 2009, each member of the Kansas District will have the opportunity to make a special offering to be divided equally between the District Scholarship Fund and the District Education Loan Repayment Fund.

The **Scholarship Fund** supports students pursuing a career in professional church work at an LCMS university or seminary. Over \$40,745 was distributed to forty-one students in 2008, with amounts varying from \$555 for freshmen to \$1,920 for seminary students.

We want to encourage more of our members to become church workers, but the high cost of tuition can be overwhelming. The average cost of tuition only at a Concordia University is \$21,464. School scholarships may reduce that figure by half, but that still leaves students with a significant amount to finance. Cost of tuition alone at the seminary in St. Louis is \$28,000. Even with a maximum scholarship award based on need of \$13,586, the student is responsible for at least \$14,414.

The **Education Loan Repayment Fund** supports professional church workers who carry indebtedness from their college and seminary days. Forty-seven applicants in 2008 reported loans totaling over \$1,102,768. The range of loans outstanding for applicants in 2008 was: \$2,087 to \$74,197 for pastors; \$2,979 to \$103,680 for teachers; and \$3,558 to \$29,400 for DCEs. All applicants received a \$1,100 grant toward their indebtedness.

Please make checks payable to Ascension Lutheran Church. These funds will be forwarded to the District.

**STEWARDSHIP  
CORNER:**

God's  
Abundance



We have before us a whole new year. Think of the abundance of possibilities and opportunities God lays before us for service to His kingdom in the minutes and hours that make up the days of the year 2009!

Abundance is a characteristic of God. He gave His only Son Who declared to us, *“I have come that [you] may have life, and have it to the full”* (John 10:10). Through Him and because of the abundance of His love for us, we *“are filled with an inexpressible and glorious joy, for [we] are receiving the goal of [our] faith, the salvation of [our] souls”* (1 Peter 1:8-9). *“The Lord is slow to anger, abounding in love and forgiving sin and rebellion”* (Numbers 14:18).

He gives the gifts of His creation to us in abundance as well, for who can count the stars in the sky, the birds in the air, or the fish in the sea? He also pours out gifts in abundance on His people. In Romans 12:6-8, we read,

*“We have different gifts, according to the grace given us. If a man’s gift is prophesying, let him use it in proportion to his faith. If it is serving, let him serve; if it is teaching, let him teach; if it is encouraging, let him encourage; if it is contributing to the needs of others, let him give generously; if it is leadership, let him govern diligently; if it is showing mercy, let him do it cheerfully.”*

God has equipped and enabled us with His abundant gifts to seek out the lost, to lead and serve on committees and boards that do the work of ministry, to provide financial support for our church workers at

home and in missions, and to teach and preach His Word for the salvation of souls and the edification of believers.

Perhaps you don't know where you fit into this picture. Perhaps you even think you're not part of the picture. Not so! The Apostle Peter wrote, *"Each one should use whatever gift he has received to serve others, faithfully administering God's grace in its various forms"* (1 Peter 4:10). Thus, we know that each of us has at least one gift and that God holds each of us responsible for using that gift. Ask God to show you where He wants to use you. Go to your pastor or other church leaders and let them know you're available in this new year to discover and use the gifts God has given you for His service.



January



LWML  
Tabitha  
Circle

Looking for an opportunity to serve?  
Please join LWML Tabitha circle on  
January 20<sup>th</sup> at 7:00 PM in Room 30 –  
Tyler Campus. For more information about  
our mission which is to offer messages of  
encouragement, caring, and thanks to  
need by making and sending cards,  
contact Carol Trissell at 722-3570 or [ctrissell@cox.net](mailto:ctrissell@cox.net).

## The Fun Starts Here!



Tyler Campus Preschool Enrollment for Fall 2009 begins on January 5, 2009. Teachers for the classes are Diane Nelson, Kendra Herbig, and Debbie Goltl.

<b>Age</b>	<b>Days</b>	<b>Time</b>	<b>Monthly Fee</b>
3-4	MW	9-11:15 AM	\$65
3-4	Tu/Th	9-11:15 AM	\$65
Pre-K	MWF	MW 1-3:15 PM; F 9-11:15 AM	\$90
Pre-K	Tu/Th/ F	1-3:15 PM	\$90

The three and four year old classes will have a maximum of 20 children with two teachers and the pre-kindergarten classes will have a maximum of 24 children with two teachers.

The 2009-2010 school year tuition will be \$65/month for the 3-4 year old program and \$90/month for the pre-kindergarten program with a \$50 non-refundable enrollment fee for each child. If you have a child that you would like to enroll, please contact Diane Nelson (722-8396), Kendra Herbig (721-3139), or call the church (722-4694) and ask for the preschool.



Ascension  
Lutheran  
Preschool



JOURNEYS ...where women from all walks & stages of life meet, share, learn and grow. Join us!

**GIRLS NIGHT OUTINGS** meet on two different nights monthly for “girl talk” and dinner out.

**Girls Night Out Tuesday, Jan. 6<sup>th</sup> at 7:00 PM** at Carlos O’Kelly’s, 527 S. Ridge Rd. To RSVP, call Karen Swanson at 722-1656.

**Girls Night Out, Too! Saturday, Jan. 17<sup>th</sup> at 5:30 PM** at Olive Garden(North of NewMarket RSVP by Thursday, Jan. 15<sup>th</sup>, to Cindy Matzek [cindy@midccs.com](mailto:cindy@midccs.com) or 744-1390.

**BIBLE STUDIES: Make your New Year’s resolve to study God’s Word!** Please consider joining these groups:

**Tyler Campus:** On February 12<sup>th</sup>, we will begin a new study. “He is My All” is part of the Design4Living series by Debbie Alsdorf. Liz Curtis Higgs, best selling author of *Bad Girls of the Bible* says “this is the perfect Bible Study for women who’ve just met the Savior or for those of us who are ready to take our relationship with Him to the next level.” Daytime group meets every Thursday at 9:00 AM in Room 12. Questions? Contact Beth Ortstadt at [tbortstadt@sbcglobal.net](mailto:tbortstadt@sbcglobal.net) or 721-2673.



**Maple Campus: Beginning in February, we will begin a new study** (Topic to be announced soon-check the Sunday bulletin). Nighttime group continues to meet every Sunday at 6:00 PM in the School Age room. Questions? Contact Sarah Mercer at 721-5320.

**Moms' Bible Study:** "Lies Women Believe" (Tyler Campus, continues to meet every other Thursday at 10:00 AM.) Childcare is provided. Contact Becca Clark at [kevindclark@sbcglobal.net](mailto:kevindclark@sbcglobal.net).

**UNFINISHED BUSINESS** is for those of us who never find the time to finish that project . . . Join us on **Monday, Jan. 12<sup>th</sup> at 7:00 PM.** (Tyler Campus, Room 31). Come visit & bring something to work on (writing Christmas Thank-You cards, updating your address book, scrapbooking those Christmas photos, or whatever!) Contact Susie Will at 942-8601 or [markwill@markwill.net](mailto:markwill@markwill.net).

**FUTURE JOURNEY:** Are you a Jane Austen fan? This is your chance to see her books brought to life. Join us for our first flick on **Thursday, Jan. 15<sup>th</sup> at 6:45 PM.** Our first movie will introduce you to Jane Austen in "Becoming Jane" starring Anne Hathaway. The curtain will go up on the "big screen" promptly at 7:00 PM at Carol Trissell's home at 1355 N. Westlink Ave. We will be showing a movie every other week, in this order: "Pride & Prejudice", "Sense & Sensibility", "Mansfield Park", "Emma", "Persuasion" and "Northanger Abbey". Attend one movie or all! Please let Carol know if you plan to attend (722-3570).



*A New Journey*



**DO YOU WANT TO LEAD A NEW JOURNEY?** Let us know your ideas for a **Journeys** get-together you would be willing to host & lead! Contact Kim Fisher at 942-2433 or [slfisher1@cox.net](mailto:slfisher1@cox.net).



*In your heart you plan your life. But the Lord decides where your steps will take you. – Proverbs 16:9*



*natedouglas*

## **NEWS** & *Notes*

**NATE DOUGLAS CONCERT** January 11<sup>th</sup> at 4:00 PM  
St. Andrews Lutheran Church  
2555 Hyacinth Lane, Wichita  
316-838-0944

Nate is a professional Christian musician based out of Fargo, ND. His musical style has been described as unique, authentic and high-energy. Come hear the message of Jesus through uplifting and inspirational music. A free will door offering will be used to support St. Andrew's 2009 youth mission trip to the Sioux Indian Reservation in South Dakota. To learn more about Nate and hear some of his music, visit [www.natedouglas.net](http://www.natedouglas.net).

